

# Economic Charts

Chart 1

Industrial Output Between 1963-1978 (1000 million Rials)					
<i>Industrial Sector</i>	1962-63	1967-68	1972-73	1977-78	<i>Annual Growth Rate</i>
Manufacturing and Mining	41.4	72.5	224.8	468.2	68.5
Construction	14.1	24.9	91.4	179.5	78.2
Water & Power	2.2	8.9	17.2	36.6	104.2
Total	57.8	106.3	333.4	684.3	72.2

# Growth of the Working Class

Chart 2

Sectoral Distribution of Total Labour Force 1963-78 (thousands)								
Sector	1962-3		1967-8		1972-3		1977-8	
	No	Total %	No	Total %	No	Total %	No	Total %
Agriculture	3672	55.1	3861	49	3600	40.9	3200	32.2
Industry	1372	20.6	1947	24.7	2550	29	3300	33.2
Services	1584	23.8	2020	25.7	2600	29.5	3379	34
Oil	36	0.5	46	0.6	50	0.6	60	0.6
Total	6664	100	7874	100	8800	100	9936	100

The Agricultural sector was under small and medium farmers and large mechanised cooperation and privately owned companies

Chart 3

The Sectoral Distribution of Labour Force 1977			
<b>1- Wage-Labourer</b>	Number (000)		%
Agriculture		662	7.5
Industry		2388	27.1
Manufacturing	900		[10.2]
Mining	88		[1.0]
Construction	1065		[12.1]
Utilities	61		[0.6]
Transport and Communication	272		[3.0]
Services			
Commerce, Finance, Insurance	260		[2.9]
Public and Private Services (including army)	1400		[15.9]
Other		34	0.39
<i>Total fully or seasonal wage-labourers</i>		4744	53.9
2 – Self-employed (non-agricultural)		1100	12.5
3 – Family workers (non-agricultural)		430	4.9
4 - Employers		220	2.6
5 – Peasants (with family labour)		2300	26
6 - Others		34	0.3
<i>Total Economically active population (EAP)</i>		8799	100

Chart 4

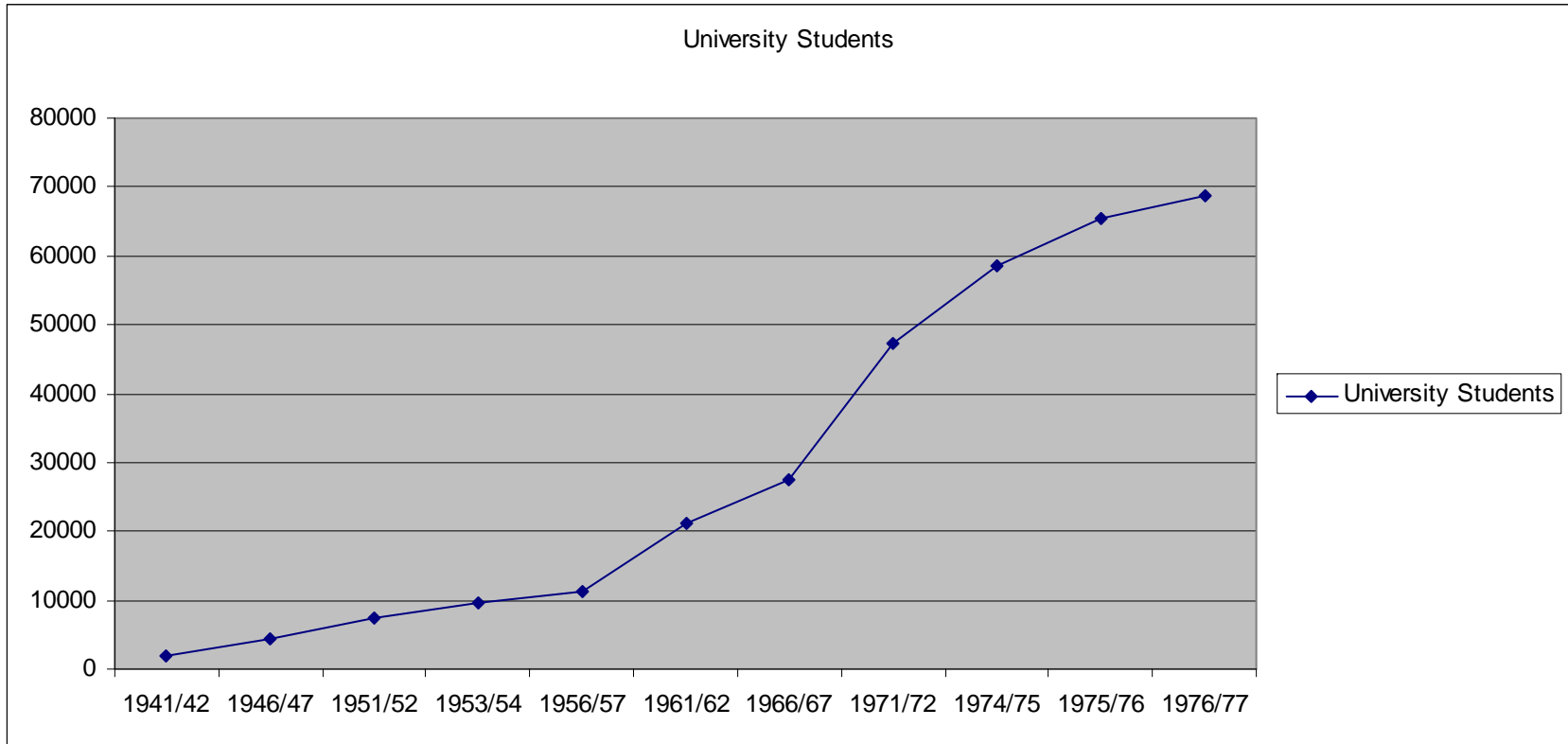


Chart 5

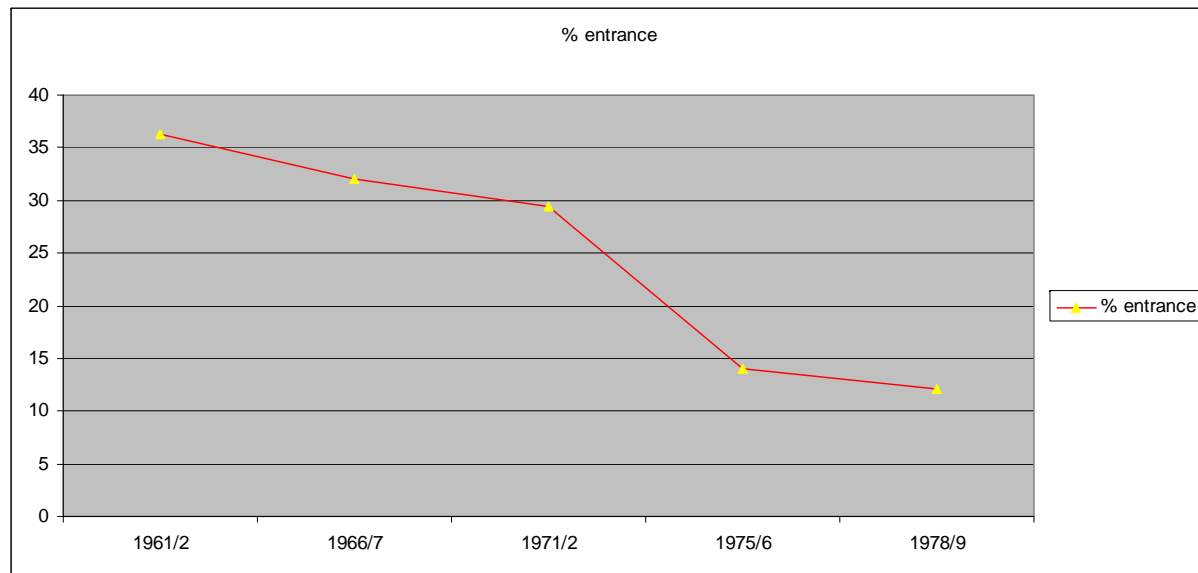
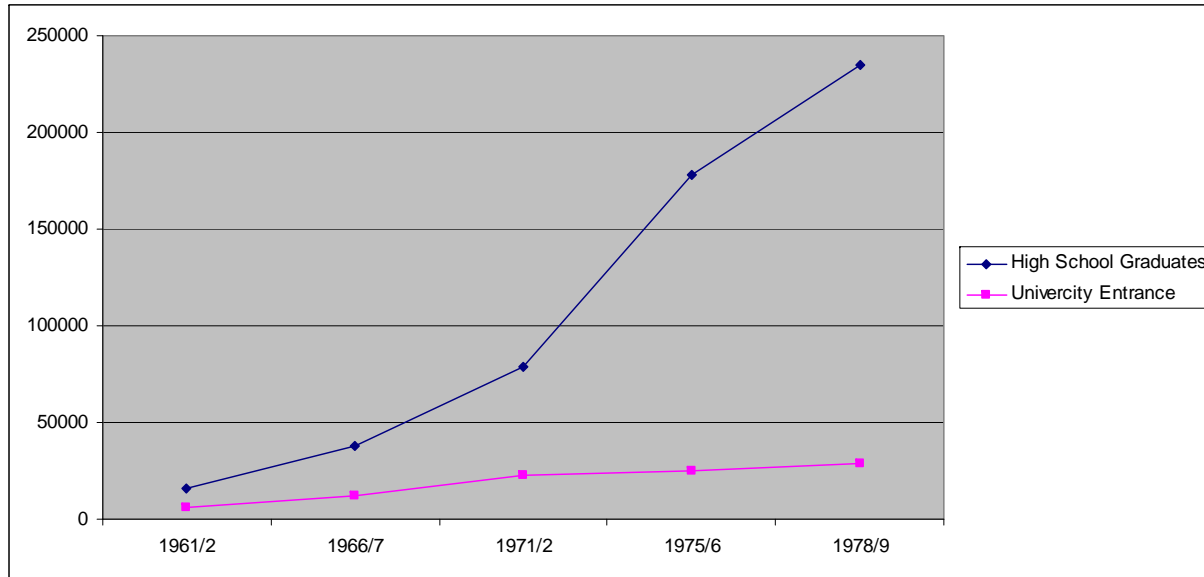
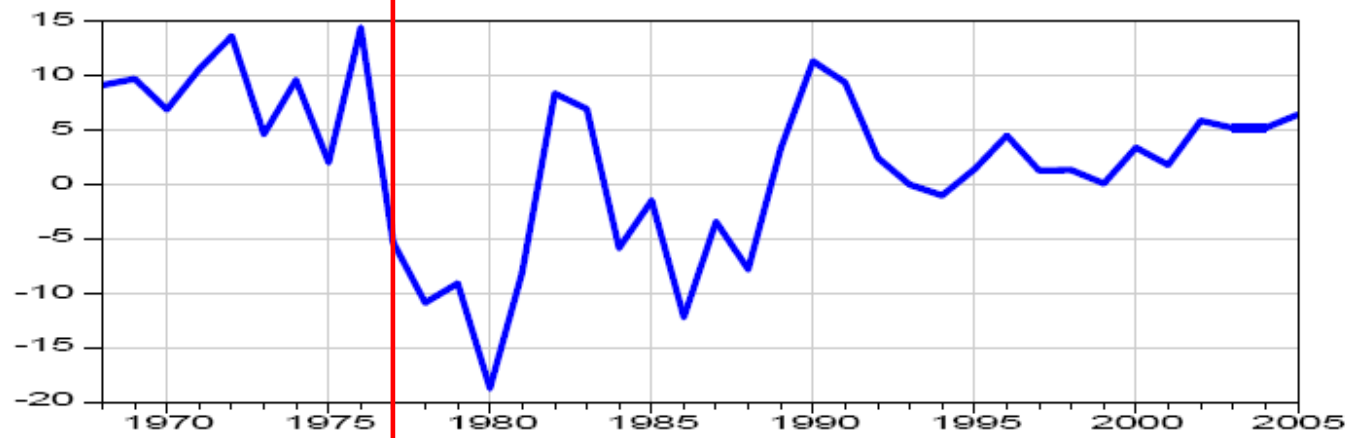


Chart 6

**Figure 1 The Growth Rate of GDP Per Capita: 1968 - 2005**



1976 Economic Crises